



K-12<sup>TH</sup> GRADES

# *Uniform Guide*

THE AMBROSE SCHOOL

2023 REVISION



GRAMMAR SCHOOL

Girls ..... 6

Boys ..... 7

UPPER SCHOOL

7th - 8th Grade Girls ..... 10

7th - 8th Grade Boys ..... 11

9th - 12th Grade Girls ..... 12

9th - 12th Grade Boys ..... 13

SOCK AND SHOE REQUIREMENTS

Girls ..... 16

Boys ..... 18

GYM & OUTERWEAR

In and out of the classroom ..... 22

ACCESSORIES

Hair accessories & jewelry ..... 23

WHERE TO PURCHASE UNIFORMS

Educational Outfitters, Flynn O'Hara, & Old Navy ..... Back Cover

# Uniform Overview



Since its inception, The Ambrose School has been committed to uniform clothing for its students. This policy has four fundamental benefits.

First, uniforms prevent the application of subjective standards of dress in the classroom. Parents, students, and teachers know that the uniform meets the school's standards of modesty. Other classical schools that operate without uniforms have commented on the amount of time their boards spend on issues of inappropriate attire. Uniforms allow our board and staff to focus on academic concerns.

Second, uniforms are a positive influence in the school. The Ambrose School places particular value on a disciplined learning environment. A child learns that when he is wearing an Ambrose uniform, he will be engaging in studious activity. Teachers have noted the advantage of uniforms in the instructional setting. This environment makes it easier for The Ambrose School to complete its primary task—the education of children.

Third, uniforms encourage a community spirit, where individuality is sacrificed for the good of the group. This removes the potential distraction of what clothing other students are wearing. This also sets our group of students apart from other schools, encouraging each student to operate as a part of a body, much like an athletic or military group identified by common dress.

Finally, uniforms usually decrease the cost of clothing. Our uniforms are rugged, high-quality uniforms that can take wear and tear. Parents can typically purchase two to three sets of uniforms to last throughout the school year. These can often be handed down to other children. If parents are interested in purchasing or selling used uniforms, The Ambrose School has a uniform consignment store across the hallway from the office where parents can sell and/or purchase used items.

SOLI DEO GLORIA  
*Glory to God Alone*





*Grammar School Uniforms*



# Grammar School

## GIRLS UNIFORMS



### K-6TH REQUIRED FORMAL & INFORMAL UNIFORM



**(K-4TH ONLY)**  
GREEN PLAID SPLIT  
FRONT JUMPER



PETER PAN COLLAR WHITE  
W/NAVY PIPING SHORT  
OR LONG SLEEVE BLOUSE



BLACK OR NAVY  
BIKE SHORTS



NAVY CREW NECK  
CARDIGAN SWEATER  
W/SCHOOL LOGO



WHITE KNEE SOCKS  
OR WHITE TIGHTS

**(5TH-6TH ONLY)**  
GREEN NAVY AND WHITE  
PLAID KNIFE PLEAT SKIRT

SKIRTS ARE REQUIRED TO  
TOUCH THE KNEE.

### 5TH-6TH OPTIONAL INFORMAL UNIFORM



**(5TH-6TH ONLY)**  
GREEN NAVY AND WHITE  
PLAID KNIFE PLEAT SKIRT

SKIRTS ARE REQUIRED TO  
TOUCH THE KNEE.



PETER PAN COLLAR WHITE  
W/NAVY PIPING SHORT  
OR LONG SLEEVE BLOUSE



BLACK OR NAVY  
BIKE SHORTS



WHITE SHORT OR LONG SLEEVE  
POLO SHIRT W/SCHOOL LOGO

# Grammar School

## BOYS UNIFORMS



### K-6TH REQUIRED FORMAL UNIFORM



KHAKI TWILL PANTS (ELASTIC  
WAIST FOR KINDERGARTEN ONLY)



BLUE SHORT OR LONG SLEEVE  
BUTTON DOWN COLLAR SHIRT



NAVY YELLOW &  
WHITE STRIPED TIE



NAVY V-NECK  
CARDIGAN SWEATER  
W/SCHOOL LOGO



BLACK LEATHER  
BELT

### K-6TH OPTIONAL INFORMAL UNIFORM



KHAKI TWILL PANTS (ELASTIC  
WAIST FOR KINDERGARTEN ONLY)



KHAKI TWILL SHORTS  
(UNTIL FALL BREAK &  
AFTER SPRING BREAK)



BLUE SHORT OR LONG SLEEVE  
BUTTON DOWN COLLAR SHIRT



NAVY SHORT OR LONG SLEEVE  
POLO SHIRT W/SCHOOL LOGO



BLACK LEATHER  
BELT





*Upper School Uniforms*



# Upper School

## 7TH-8TH GRADE GIRLS UNIFORMS



### REQUIRED FORMAL UNIFORM



RED/NAVY WRAP AROUND KILT  
**SKIRTS ARE REQUIRED TO TOUCH THE KNEE.\***

WHITE SHORT OR LONG SLEEVE BUTTON DOWN COLLAR BLOUSE

BLACK OR NAVY BIKE SHORTS

RED V-NECK PULLOVER SWEATER W/SCHOOL LOGO

NAVY KNEE SOCKS OR NAVY TIGHTS

### OPTIONAL INFORMAL UNIFORM



RED/NAVY WRAP AROUND KILT  
**SKIRTS ARE REQUIRED TO TOUCH THE KNEE.\***

WHITE SHORT OR LONG SLEEVE BUTTON DOWN COLLAR BLOUSE

BLACK OR NAVY BIKE SHORTS

LADIES NAVY SHORT OR LONG SLEEVE POLO SHIRT W/SCHOOL LOGO

# Upper School

## 7TH-8TH GRADE BOYS UNIFORMS



### REQUIRED FORMAL UNIFORM



KHAKI TWILL PANTS

BLUE SHORT OR LONG SLEEVE BUTTON DOWN COLLAR SHIRT

MAROON TIE

NAVY V-NECK PULLOVER SWEATER W/SCHOOL LOGO

BLACK LEATHER BELT

### OPTIONAL INFORMAL UNIFORM



KHAKI TWILL PANTS

KHAKI TWILL SHORTS (UNTIL FALL BREAK & AFTER SPRING BREAK)

BLUE SHORT OR LONG SLEEVE BUTTON DOWN COLLAR SHIRT

NAVY SHORT OR LONG SLEEVE POLO SHIRT W/SCHOOL LOGO

BLACK LEATHER BELT



# Upper School

## 9TH-12TH GRADE GIRLS UNIFORMS



### REQUIRED FORMAL UNIFORM



RED/NAVY WRAP AROUND KILT  
**SKIRTS ARE REQUIRED TO TOUCH THE KNEE.\***



WHITE SHORT OR LONG SLEEVE BUTTON DOWN COLLAR BLOUSE



BLACK OR NAVY BIKE SHORTS



RED WOOL WOMEN'S BLAZER



NAVY KNEE SOCKS OR NAVY TIGHTS

### OPTIONAL INFORMAL UNIFORM



RED/NAVY WRAP AROUND KILT  
**SKIRTS ARE REQUIRED TO TOUCH THE KNEE.\***



WHITE SHORT OR LONG SLEEVE BUTTON DOWN COLLAR BLOUSE



BLACK OR NAVY BIKE SHORTS



LADIES NAVY SHORT OR LONG SLEEVE POLO SHIRT W/SCHOOL LOGO



RED V-NECK PULLOVER SWEATER W/SCHOOL LOGO

# Upper School

## 9TH-12TH GRADE BOYS UNIFORMS



### REQUIRED FORMAL UNIFORM



KHAKI TWILL PANTS



BLUE SHORT OR LONG SLEEVE BUTTON DOWN COLLAR SHIRT



MAROON & NAVY STRIPED TIE



NAVY POLYESTER BLAZER



BLACK LEATHER BELT

### OPTIONAL INFORMAL UNIFORM



KHAKI TWILL PANTS



BLACK LEATHER BELT



KHAKI TWILL SHORTS (UNTIL FALL BREAK & AFTER SPRING BREAK)



BLUE SHORT OR LONG SLEEVE BUTTON DOWN COLLAR SHIRT



NAVY SHORT OR LONG SLEEVE POLO SHIRT W/SCHOOL LOGO



NAVY V-NECK PULLOVER SWEATER W/SCHOOL LOGO





*Locks and Shoes*



# Girls Shoe Requirements

## K-12 ACCEPTABLE SHOES



BLACK TEXTURED LEATHER



BLACK LOAFER



BLACK BALLET FLAT



BLACK MARY JANE



BLACK CANVAS TIE



BLACK LEATHER TIE



BLACK CANVAS SLIP ON



BLACK TOMS OR BOBS  
WITH A BLACK SOLE

## UNACCEPTABLE SHOES



WHITE SOLE OR  
LARGE LOGO



SPARKLY



PATENT LEATHER  
OR SUEDE



COLOR OTHER THAN BLACK



A HIGH HEEL

# Girls Sock Requirements

## K-6 REQUIRED FORMAL SOCKS



WHITE KNEE SOCKS  
OR WHITE TIGHTS

## 7-12 REQUIRED FORMAL SOCKS



NAVY KNEE SOCKS  
OR NAVY TIGHTS

## K-12 INFORMAL SOCKS



WHITE FOLD OVER  
WITH LACE OR RUFFLES



WHITE FOLD OVER



WHITE LOW ANKLE



WHITE MID ANKLE



BLACK LOW ANKLE      BLACK MID CALF  
**NO ATHLETIC LOGOS**

## UNACCEPTABLE SOCKS



MID CALF FOR K-6



ATHLETIC WITH LOGO



ADORNMENTS  
OTHER THAN LACE



# Boys Shoe Requirements

## K-12 ACCEPTABLE SHOES



BLACK SLIP ON DRESS SHOE



BLACK VELCRO & BUCKLE



BLACK TIE DRESS SHOE



(TIE OR VELCRO) ALL BLACK LEATHER TENNIS SHOE WITH BLACK SOLE



BLACK CANVAS WITH BLACK SOLE

## UNACCEPTABLE SHOES



WHITE SOLE OR  
LARGE LOGOS



TWO TONE



PATENT LEATHER  
OR SUEDE



COLOR OTHER THAN BLACK

# Boys Sock Requirements

## K-12 ACCEPTABLE SOCKS



ANY KHAKE SOCKS



BLACK SOCKS

**NO ATHLETIC LOGOS**

## UNACCEPTABLE SOCKS



LOW ANKLE



PATTERNED



OTHER COLORS







# Gym and Outerwear

## K-12 GYM SHOES



ANY ATHLETIC SHOE WITH A  
NON-MARKING SOLE

## ACCEPTABLE IN CLASS ON INFORMAL DAYS



NAVY ZIP JACKET W/SCHOOL CREST  
(Available for K-12 students to purchase  
from Educational Outfitters)



GIRL'S JACKET  
LETTERMAN'S JACKET  
(Only available to 9-12 students that have lettered in a sport.  
Order through Jostens. See uniform coordinator for details.)



## ACCEPTABLE IN CLASS ON ALL DAYS



School uniform sweaters and upper school blazers are acceptable outerwear for the classroom on all days of the week.  
**In grades 7-12, Archer athletic and House logowear is acceptable on Fridays after Christmas break, until spring break.**

# Accessories

## HAIR ACCESSORIES AND JEWELRY

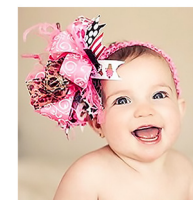


Any hair accessory that is available on the website or that coordinates with the school uniforms is acceptable. If your hair accessory is distracting, your teacher may ask you to remove it. These are a few examples of acceptable hair accessories.

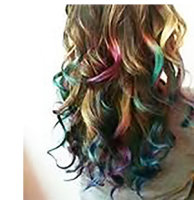


Please keep jewelry small and simple. Be discerning when choosing jewelry. These are a few examples.

## UNACCEPTABLE HAIR ACCESSORIES



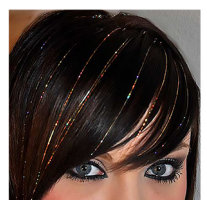
LARGE ACCESSORIES



PERMANENT OR TEMPORARY  
UNNATURAL HAIR COLOR

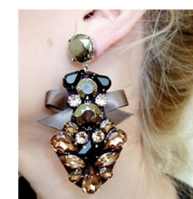


FEATHERS



TINSEL

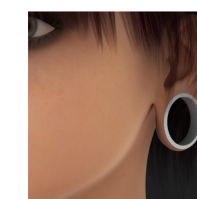
## UNACCEPTABLE JEWELRY



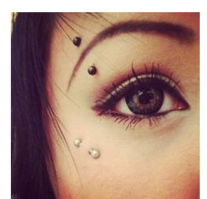
EXCESSIVELY LARGE



ALTERNATIVE STYLE



ANY SIZE EAR  
GAUGES



FACIAL PIERCINGS OR  
IMPLANTS (INCLUDING  
TONGUE PIERCINGS)





## EDUCATIONAL OUTFITTERS

All uniform pieces may be purchased through Educational Outfitters, except the letterman's jacket (see page 22).

### Contact:

- Online at: [boise.educationaloutfitters.com/find-my-school/ambrose](http://boise.educationaloutfitters.com/find-my-school/ambrose)
- Call 208-515-2444
- Located at 9543 W. Emerald, Suite 105, Boise, ID 83704



## FLYNN & O'HARA

All uniform pieces are available with the exception of the navy zip jacket with crest (see page 22).

- Go to [flynnohara.com](http://flynnohara.com) to order.



## LANDS' END

A few uniform pieces can also be ordered through Lands' End.

### Boys

- Khaki pants and shorts
- Oxford formal shirts
- Leather belts
- Socks

### Girls

- 5th & 6th grade polo shirts
- White formal shirts
- Socks

Make sure you create an account for your student before looking at uniform options. To order the approved style, go to:

- [landsend.com](http://landsend.com)
- Create an account
- Find your school under uniforms
- Create a profile for your student
- Purchase the approved item

If you have any questions, please contact  
Brooke Jacobs at [bjacobs@theambroseschool.org](mailto:bjacobs@theambroseschool.org).



6100 N. LOCUST GROVE, MERIDIAN, IDAHO 83646  
ph (208) 323-3888 | fax (208) 672-0522 | [theambroseschool.org](http://theambroseschool.org)